



J Murphy & Sons



Access for all
enhancements



July 2019



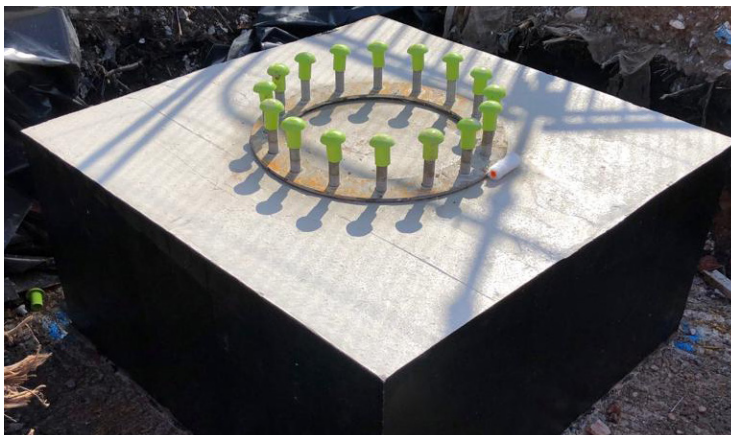
10 weeks

We were contracted by J Murphy and Sons to undertake the reinforced concrete and associated works to lift pits, island platform, motor/ plant room and staircase foundations as part of the Stechford Station enhancements project.

Our works included:

- Lift pits, fixed reinforcement and installed traditional formwork with bolt clusters hung in place for steel erectors, on both platforms (Platform 1 road side, platform 2 island platform)
- Pile caps, fixed reinforcement and installed traditional formwork to all steel column Pile caps, installed huge bolt clusters to carry steel bridge sections (By Others) on both platforms.
- Motor room slabs, fixed reinforcement and installed traditional formwork, ducts were also installed between the re-bar and encased in concrete for future use.

All concrete was poured in-situ for all reinforced elements (island platform pours had to be on Saturday nights, once possession and isolation of the OH's had been given).



Universal Group

1st Floor Ashbrook House,
Forest Street, Sutton In
Ashfield, Nottinghamshire,
NG17 1BE

Reg03728536, VAT990830888