



McLaren



Underground car park tension piles



February 2017



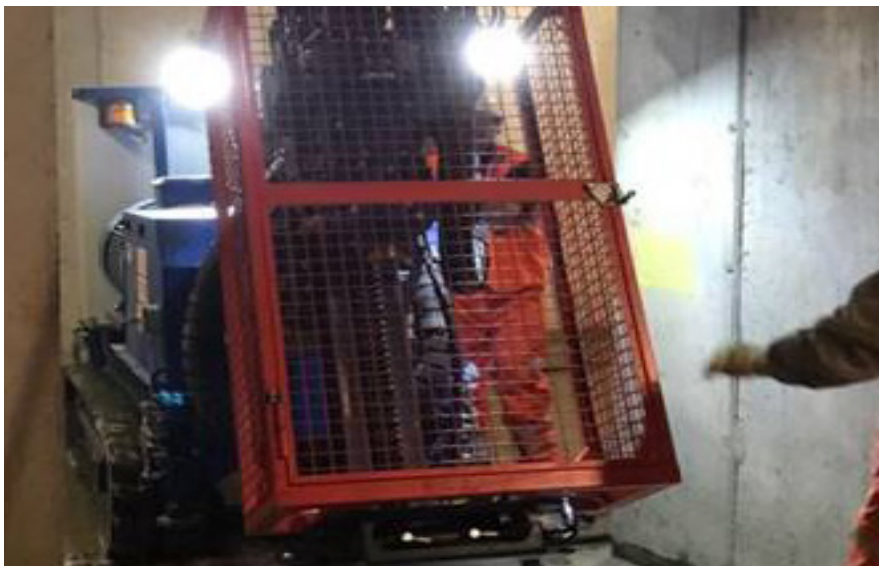
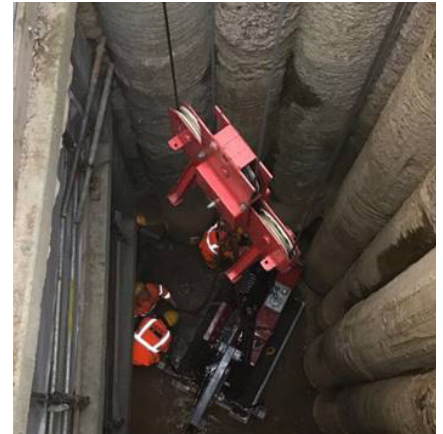
16 weeks

**We were contracted by McLaren to install a total of 750no 16m long tension piles.**

This work was carried out in a part built underground car park and cinema, which was located on level -6.

The only access was either down an air shaft 3.6m x 2.8m (using a tower crane) or the car park ramps (with a 3.5ton weight limit) and in addition to this, the headroom was only 2.350m. Due to the carbon monoxide and noise restrictions we used electric piling rigs (2x Krupp Joy 2 rigs and 1x TEI TD75) and grout mixers. We demonstrated our innovative skills by converting a D1000 drop hammer rig and 2xCol 4-10 grout mixers to electric and had a drill mast fitted, this also used one of our 550 drifters.

The programme was challenging at just 12 weeks and the drilling was in Thanet sand formation - which can be very difficult to drill due to the high level of friction. Despite these challenges, the pre project planning and execution on site, ensured we successfully completed the project well within programme.



### Universal Group

Unit 4, Nunn Close,  
Huthwaite, Sutton In Ashfield,  
Nottinghamshire, NG17 2HW

Reg03728536, VAT990830888