



Morgan Sindall



South Shields
Transport Interchange



October 2018 &
August 2019

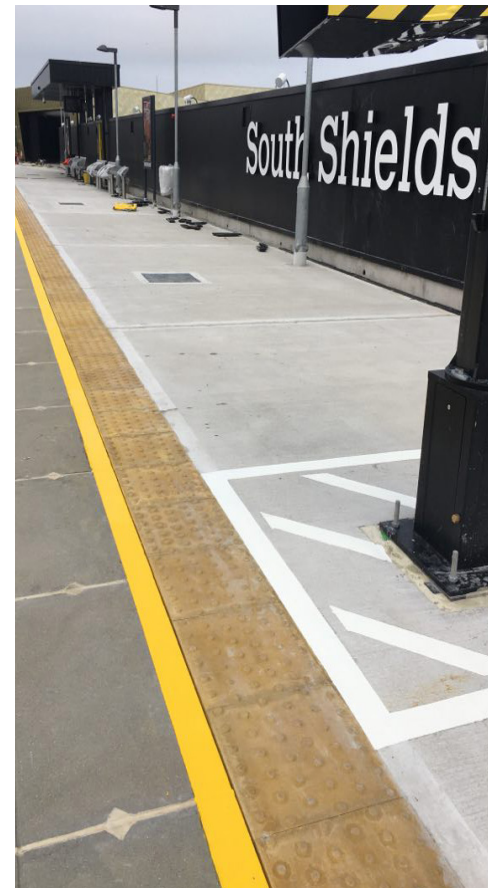


10 weeks (over 2
visits)

We were contracted by Morgan Sindall to construct the new metro rail station and associated platform, as part of the South Shields Transport Interchange project.

Our works included:

- The installation of driven 508 diameter piles using a Movax side grip piling hammer off track with an RRV, during a blockade.
- Associated cast in situ ground beams and cross walls.
- Cast in situ slab incorporating drainage channels and service ducting.
- Associated platform ramp ends.
- Platform finishes including coper, tactile and screeding.



Universal Group

1st Floor Ashbrook House,
Forest Street, Sutton In
Ashfield, Nottinghamshire,
NG17 1BE

Reg03728536, VAT990830888