



Balfour Beatty



'U' shaped  
footbridge



November 2018



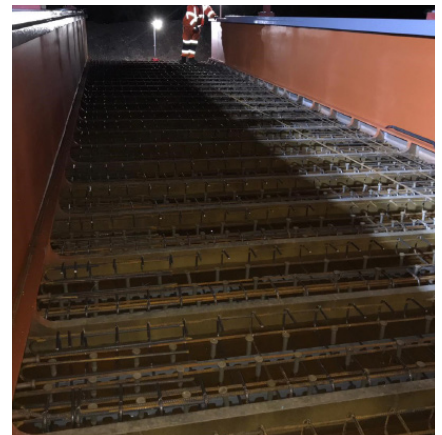
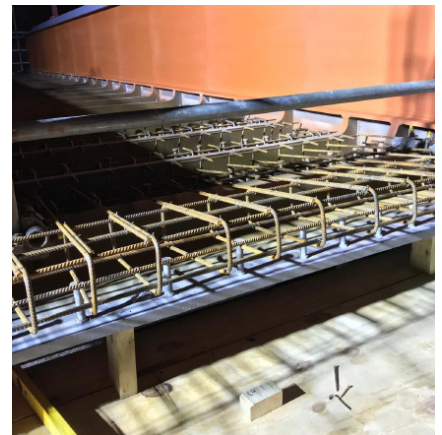
2 Weeks

**We were contracted by Balfour Beatty to fix in place the formwork to a pre-formed steel 'U' deck to replace the existing Pill Underbridge.**

The steel 'U' deck was fabricated off site and delivered by road to the Balfour Beatty site at the side of the Severn Estuary in Brisol. This was then unloaded by crane and placed onto four temporary blockwork piers, these were set on timber "EKI" mats at a predetermined position set out by the engineer.

Universal Civils had to work with pace and precision so that the finished 'U' deck would be ready to replace the existing bridge during a 53 hour possession. The reinforced concrete needed to reach a certain strength before it was ready to be lifted in to place. Two new pre-cast cills had to be placed in-situ on top of the existing abutment walls. The completed bridge was then placed on the pre-cast cills. Waterproof material and end of deck drainage was then placed at either end of the deck before another P-Way contractor placed the ballast, sleepers and track over the 'U' deck,

This was then passed back to Network Rail for the safe passage of trains once the possession was handed back.



## Universal Group

Unit 4, Nunn Close,  
Huthwaite, Sutton In Ashfield,  
Nottinghamshire, NG17 2HW

Reg03728536, VAT990830888